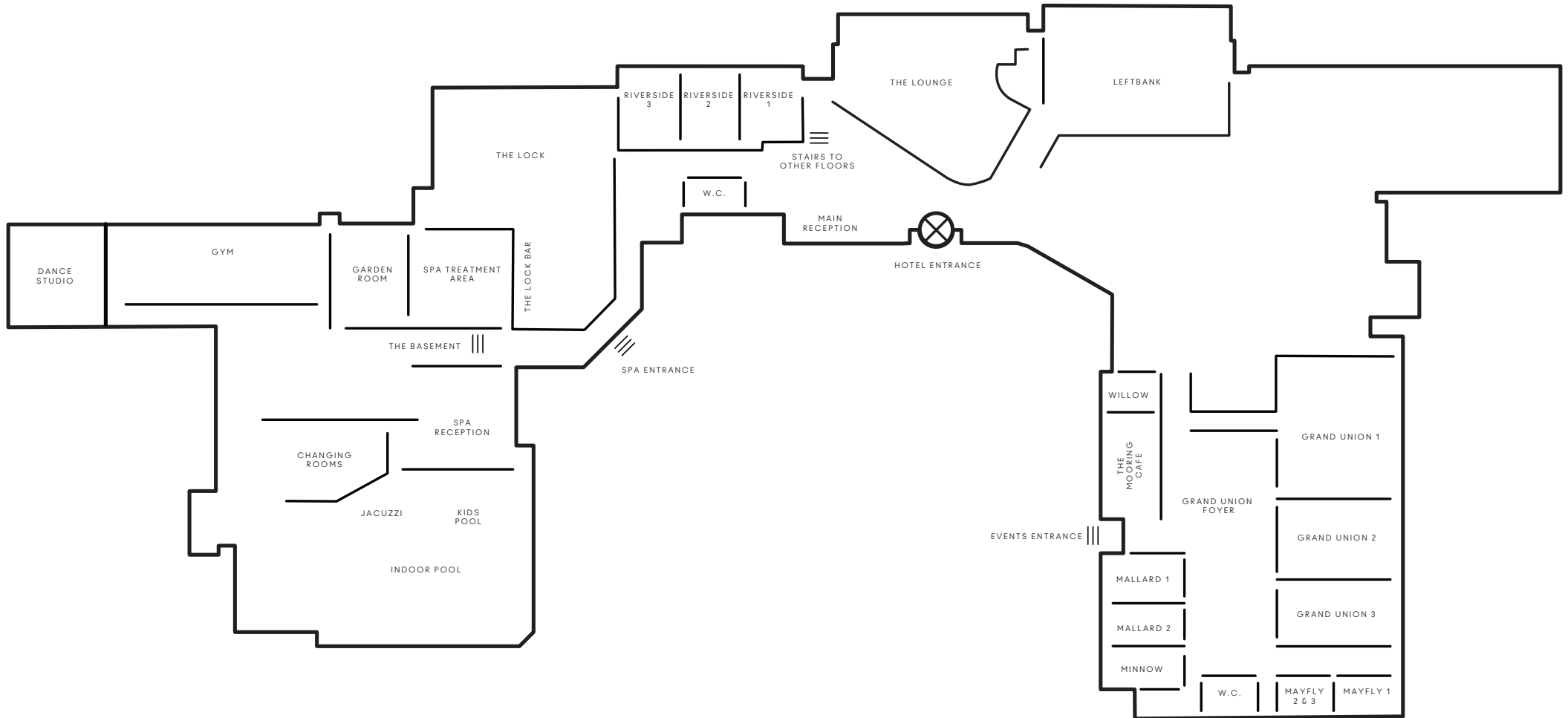




THE RUNNYMEDE ON THAMES

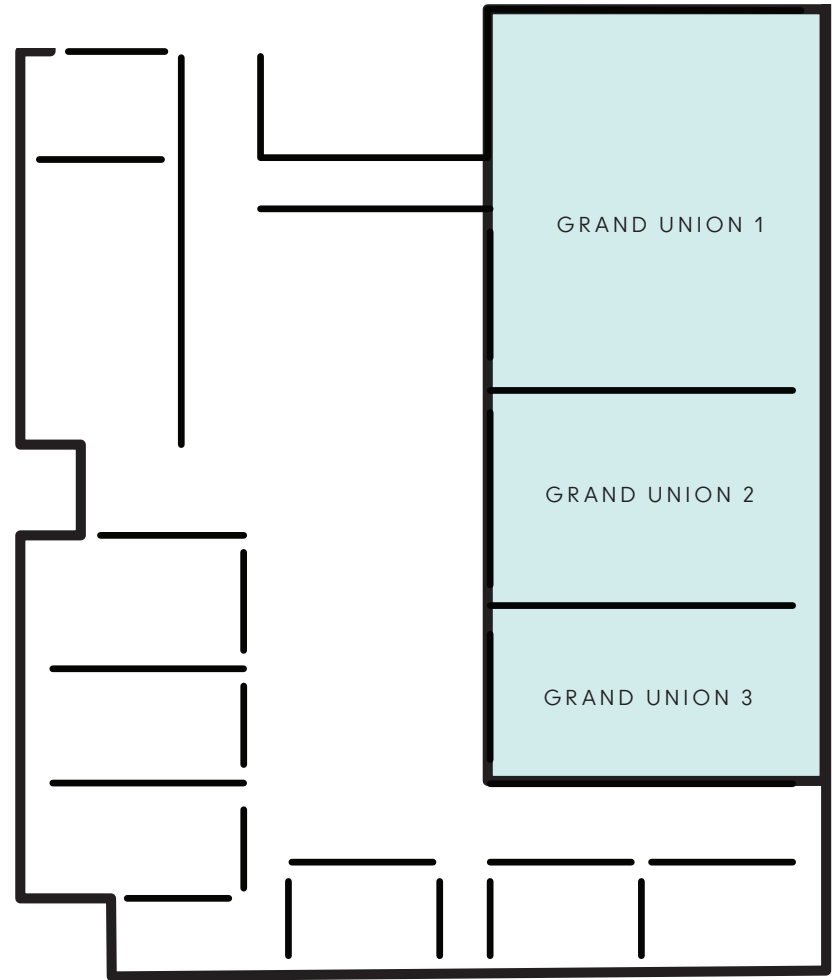
MEETINGS AND EVENTS



MEETING ROOM CAPACITIES

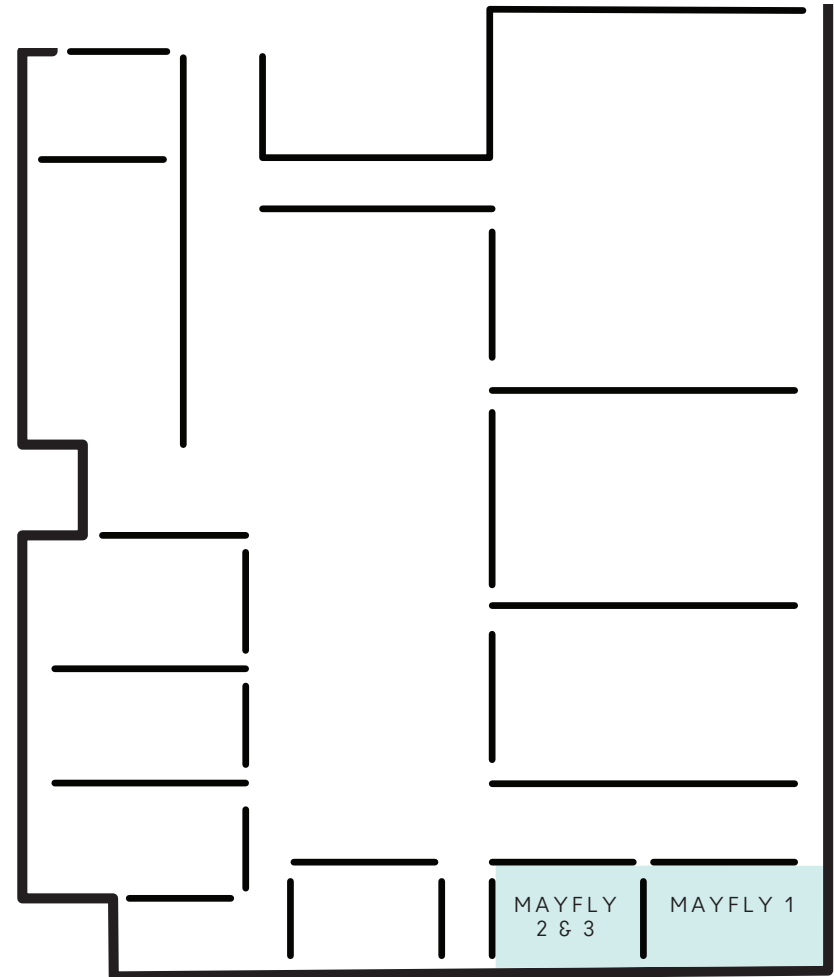
THE GRAND UNION SUITES

	GRAND UNION SUITE	GRAND UNION 1	GRAND UNION 2	GRAND UNION 3	GRAND UNION 1 & 2	GRAND UNION 2 & 3
SUITE DIMENSIONS						
Width	26.2m	11.2m	7.5m	7.5m	18.9m	14.9m
Length	12.8m	12.8m	12.8m	12.8m	12.8m	12.8m
Height	3.1m	3.1m	3.1m	3.1m	3.1m	3.1m
CAPACITIES						
Cabaret	144	54	30	30	96	96
Theatre	350	150	100	100	250	200
Classroom	250	80	60	60	150	120
Open Square	96	54	45	45	74	60
U-Shape	84	42	40	40	62	48
Boardroom	76	50	35	35	60	50
Banquet / Dinner	300	120	70	70	180	150
Dinner Dance	250	100	n/a	n/a	n/a	n/a
Informal / Standing Reception	350	150	100	100	250	250
EQUIPMENT						
Drop Down Screen	Yes	Yes	Yes	Yes	Yes	Yes
Data Projector	Yes	Yes	Yes	Yes	Yes	Yes
Privalight Glazing	Yes	Yes	Yes	Yes	Yes	Yes
PA SYSTEM						
Available In Room	Yes	Yes	Yes	Yes	Yes	Yes



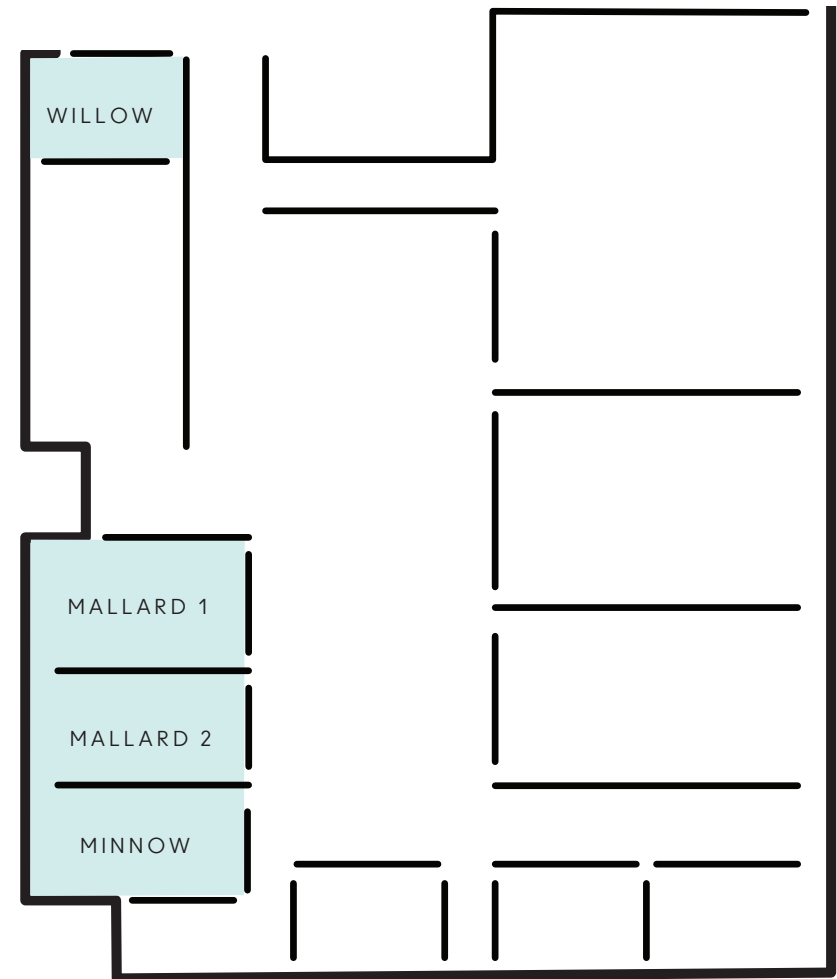
THE MAYFLY SUITES

	MAYFLY 1	MAYFLY 2	MAYFLY 3	MAYFLY 2&3
SUITE DIMENSIONS				
Width	5.9m	3.0m	3.2m	6.2m
Length	6.3m	4.2m	4.2m	4.2m
Height	2.8m	2.8m	2.8m	2.8m
CAPACITIES				
Boardroom	16	6	6	8
EQUIPMENT				
LCD Screen	Yes	Yes	No	Yes
Privalight Glazing	No	Yes	Yes	Yes
Interactive Whiteboard	Yes	No	Yes	Yes
Whiteboard (wall)	Yes	No	No	No



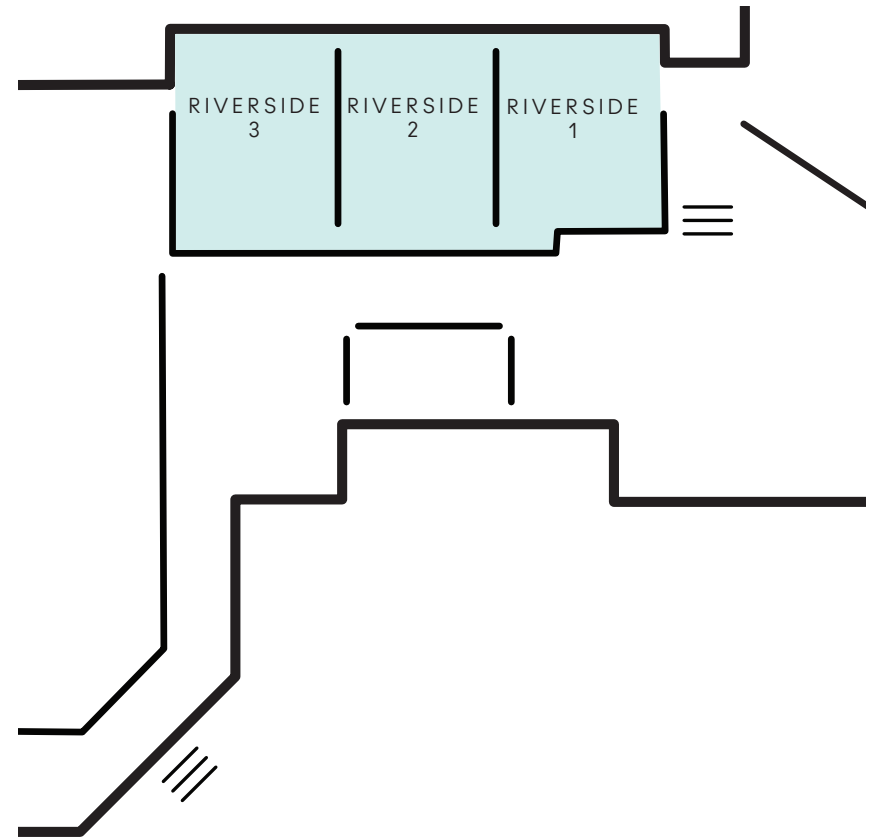
WILLOW, MALLARD AND MINNOW SUITES

	WILLOW SUITE	MINNOW SUITE	MALLARD 1	MALLARD 2	MALLARD 1 & 2
SUITE DIMENSIONS					
Width	3.5m	3.6m	5.6m	3.6m	9.2m
Length	7.0m	7.0m	7.0m	7.0m	7.0m
Height	2.5m	2.6m	2.6m	2.6m	2.6m
CAPACITIES					
Cabaret	n/a	n/a	n/a	n/a	18
Theatre	n/a	n/a	30	15	50
Classroom	n/a	n/a	15	n/a	24
U-Shape	n/a	n/a	12	n/a	16
Boardroom	12	12	12	12	24
Banquet / Dinner	12	n/a	20	n/a	36
Informal / Standing Reception	n/a	n/a	15	15	50
EQUIPMENT					
LCD Screen	Yes	Yes	No	Yes	Yes
Drop Down Screen	No	No	Yes	No	Yes
Data Projector	No	No	Yes	No	Yes
Privalight Glazing	No	No	Yes	No	Yes
Interactive Whiteboard	No	No	Yes	No	Yes
Whiteboard (wall)	No	Yes	No	No	No



THE RIVERSIDE SUITES

	RIVERSIDE SUITE	RIVERSIDE 1	RIVERSIDE 2	RIVERSIDE 3	RIVERSIDE 1&2	RIVERSIDE 2&3
SUITE DIMENSIONS						
Width	15.9m	5.5m	4.9m	5.5m	10.4m	10.4m
Length	7.3m	7.3m	7.3m	7.3m	7.3m	7.3m
Height	2.48m	2.48m	2.48m	2.48m	2.48m	2.48m
CAPACITIES						
Cabaret	48	12	12	12	24	24
Theatre	120	40	30	40	70	70
Classroom	72	20	12	20	32	32
Open Square	n/a	20	18	24	30	30
U-Shape	42	16	12	16	26	26
Boardroom Without Equipment	50	20	14	20	34	34
Banquet / Dinner	110	30	20	40	50	60
Dinner Dance	80	n/a	n/a	n/a	40	44
Informal / Standing Reception	120	40	30	40	70	70
EQUIPMENT						
Drop Down Screen	Yes	Yes	Yes	Yes	Yes	Yes
Data Projector	Yes	Yes	Yes	Yes	Yes	Yes
PA SYSTEM						
Available In Room	Yes	Yes	Yes	Yes	Yes	Yes



THE BASEMENT

THE BASEMENT

SUITE DIMENSIONS

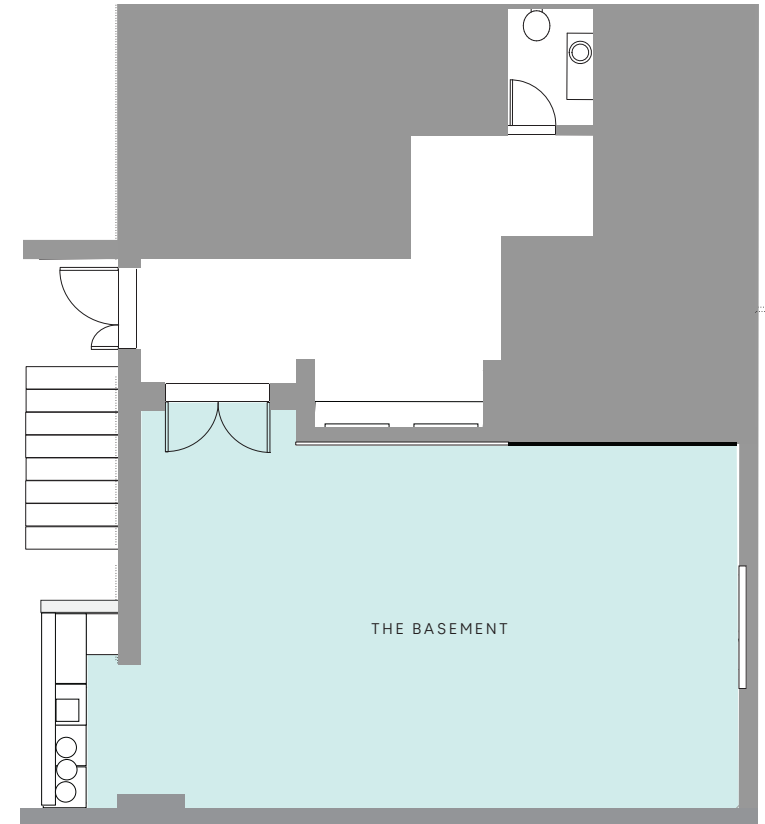
Width	5.2m
Length	8.8m
Height	2.38m

CAPACITIES

Theatre	20
Banquet / Dinner	16
Informal / Standing Reception	30

EQUIPMENT

LCD Screen	Yes
------------	-----





THE RUNNYMEDE

ON THAMES

	GRAND UNION SUITE	GRAND UNION 1	GRAND UNION 2	GRAND UNION 3	GRAND UNION 1&2	GRAND UNION 2&3	MINNOW SUITE	MALLARD 1	MALLARD 2	MALLARD 1&2	WILLOW	MAYFLY 1	MAYFLY 2	MAYFLY 3	MAYFLY 2&3	RIVERSIDE SUITE	RIVERSIDE 1	RIVERSIDE 2	RIVERSIDE 3	RIVERSIDE 1&2	RIVERSIDE 2&3	THE BASEMENT
SUITE DIMENSIONS																						
Width	26.2m	11.2m	7.5m	7.5m	18.9m	14.9m	3.6m	5.6m	3.6m	9.2m	3.5m	5.9m	3.0m	3.2m	6.2m	15.9m	5.5m	4.9m	5.5m	10.4m	10.4m	5.2m
Length	12.8m	12.8m	12.8m	12.8m	12.8m	12.8m	7.0m	7.0m	7.0m	7.0m	7.0m	6.3m	4.2m	4.2m	4.2m	7.3m	7.3m	7.3m	7.3m	7.3m	7.3m	8.8m
Height	3.1m	3.1m	3.1m	3.1m	3.1m	3.1m	2.6m	2.6m	2.6m	2.6m	2.5m	2.8m	2.8m	2.8m	2.8m	2.48m	2.48m	2.48m	2.48m	2.48m	2.48m	2.38m
CAPACITIES																						
Cabaret	144	54	30	30	96	96	n/a	n/a	n/a	18	n/a	n/a	n/a	n/a	n/a	48	12	12	12	24	24	n/a
Theatre	350	150	100	100	250	200	n/a	30	15	50	n/a	n/a	n/a	n/a	n/a	120	40	30	40	70	70	20
Classroom	250	80	60	60	150	120	n/a	15	n/a	24	n/a	n/a	n/a	n/a	n/a	72	20	12	20	32	32	n/a
Open Square	96	54	45	45	74	60	n/a	n/a	n/a	n/a	n/a	n/a	n/a	n/a	n/a	n/a	20	18	24	30	30	n/a
U-Shape	84	42	40	40	62	48	n/a	12	n/a	16	n/a	n/a	n/a	n/a	n/a	42	16	12	16	26	26	n/a
Boardroom With Equipment	76	50	35	35	60	50	11	10	11	24	11	16	6	6	8	50	20	14	20	34	34	n/a
Boardroom Without Equipment	76	50	35	35	60	50	12	12	12	24	12	16	6	6	8	50	20	14	20	34	34	n/a
Banquet / Dinner	300	120	70	70	180	150	n/a	20	n/a	36	n/a	n/a	n/a	n/a	n/a	110	30	20	40	50	60	16
Dinner Dance	250	100	n/a	n/a	n/a	n/a	n/a	n/a	n/a	n/a	n/a	n/a	n/a	n/a	n/a	80	n/a	n/a	n/a	40	44	n/a
Informal / Standing Reception	350	150	100	100	250	250	n/a	15	15	50	n/a	n/a	n/a	n/a	n/a	120	40	30	40	70	70	30
LIGHTING																						
Tungsten / Fluorescent	Both	Both	Both	Both	Both	Both	Both	Both	Both	Both	Both	Both	Both	Both	Both	Both	Both	Both	Both	Both	Both	Both
Internal Controls	Yes	Yes	Yes	Yes	Yes	Yes	Yes	Yes	Yes	Yes	Yes	Yes	Yes	Yes	Yes	Yes	Yes	Yes	Yes	Yes	Yes	Yes
Dimmers	Yes	Yes	Yes	Yes	Yes	Yes	Yes	Yes	Yes	Yes	Yes	Yes	Yes	Yes	Yes	Yes	Yes	Yes	Yes	Yes	Yes	Yes
Natural Daylight	Yes	Yes	Yes	Yes	Yes	Yes	Yes	Yes	Yes	Yes	Yes	Yes	Yes	Yes	Yes	Yes	Yes	Yes	Yes	Yes	Yes	No
POWER																						
Number of 13 Amp (double sockets)	18	8	5	5	13	10	7	6	7	13	7	4	4	5	9	10	4	2	4	6	6	6
3-Phase Power Point	2	1	0	1	0	0	0	0	0	0	0	0	0	0	0	1	1	0	0	0	0	0
EQUIPMENT																						
Crestron Control Panels*	Yes	Yes	Yes	Yes	Yes	Yes	Yes	Yes	Yes	Yes	Yes	Yes	Yes	Yes	Yes	Yes	Yes	Yes	Yes	Yes	Yes	No
LCD Screen	No	No	No	No	No	No	Yes	No	Yes	Yes	No	Yes	Yes	No	Yes	No	No	No	No	No	No	Yes
Drop Down Screen	Yes	Yes	Yes	Yes	Yes	Yes	No	Yes	No	Yes	Yes	No	No	No	No	Yes	Yes	Yes	Yes	Yes	Yes	No
Data Projector	Yes	Yes	Yes	Yes	Yes	Yes	No	Yes	No	Yes	Yes	No	No	No	No	Yes	Yes	Yes	Yes	Yes	Yes	No
Privalight Glazing	Yes	Yes	Yes	Yes	Yes	Yes	No	Yes	No	Yes	No	No	Yes	Yes	Yes	No	No	No	No	No	No	No
Interactive Whiteboard	No	No	No	No	No	No	No	Yes	No	Yes	No	Yes	No	Yes	Yes	No	No	No	No	No	No	No
Whiteboard (wall)	No	No	No	No	No	No	Yes	No	No	No	No	Yes	No	No	No	No	No	No	No	No	No	Yes
Flipcharts	No	No	No	No	No	No	Yes	No	No	No	No	Yes	No	No	No	No	No	No	No	No	No	No
PA SYSTEM																						
Available In Room	Yes	Yes	Yes	Yes	Yes	Yes	No	No	No	No	No	No	No	No	No	Yes	Yes	Yes	Yes	Yes	Yes	No
AIR-CONDITIONING																						
Controllable From Meeting Room	Yes	Yes	Yes	Yes	Yes	Yes	Yes	Yes	Yes	Yes	Yes	Yes	Yes	Yes	Yes	Yes	Yes	Yes	Yes	Yes	Yes	No
ACCESS																						
External Balconies or Terraces	Yes	No	Yes	Yes	Yes	Yes	Yes	Yes	Yes	Yes	Yes	Yes	Yes	Yes	Yes	Yes	Yes	Yes	Yes	Yes	Yes	No
Access Door ways	1.2m x 2m	1.2m x 2m	1.2m x 2m	1.2m x 2m	1.2m x 2m	1.2m x 2m	0.75m x 2m	1.4m x 2m	0.75m x 2m	1.4m x 2m	0.75m x 2m	0.75 x 2m	0.75m x 2m	0.75m x 2m	0.75m x 2m	1.35m x 2m	1.35m x 2m	1.35m x 2m	1.35m x 2m	1.35m x 2m	1.35m x 2m	1m x 1.94
Delegate Access Via	Events Entrance	Events Entrance	Events Entrance	Events Entrance	Events Entrance	Events Entrance	Events Entrance	Events Entrance	Events Entrance	Events Entrance	Events Entrance	Events Entrance	Events Entrance	Events Entrance	Events Entrance	Hotel Entrance	Hotel Entrance	Hotel Entrance	Hotel Entrance	Hotel Entrance	Hotel Entrance	Spa Entrance

* Crestron Control Panels are an intuitive easy-to-use touchpanel that allow you to control your lighting, audio visual equipment, privalight glazing & offer a service call button for Meetings & Events Guest Services. | Complimentary WiFi is available in all suites | BT Sports is available in The Basement Suite